

SKIN  TECH  
advanced skin technologies

Advice and  
recommendations  
FOR YOUR PEEL



ONE LIFE - ONE SKIN



## Skin Tech peels

**The purpose of a peel is to remedy skin ageing, pigmentation marks, acne scars, seborrhea, etc. The skin's texture is refined and the complexion becomes clearer and brighter.**

There are three different types of peel, light, medium or deep, depending on the depth to which the skin is treated. All peels should be carried out in a surgery by an experienced doctor. A medical peel is not just an exfoliation treatment that can be done at home.

To optimize peeling results whilst keeping secondary effects to a minimum, **Skin Tech has prepared perfectly complementary daily care products.**

Depending on the condition of your skin and the results you are looking for, your doctor will help you choose the peel and daily care products you need. Only doctor is qualified to do this.

Before applying a peel, we recommend you remove your jewellery (necklace, earrings, etc.) to avoid any reaction or redness. You can put them back on again 2 or 3 days later.

## Easy Phytic Solution

### TO GIVE YOUR SKIN A NEW GLOW

This is a slow-release, superficial peel designed for those of you who don't want or can't afford to have visible flaking. Easy Phytic evens out the complexion and has a marked tightening effect. It helps erase acne marks.

#### In practice:

While the peel is being applied, you will feel a tingling sensation. At the end of the session, your practitioner massages the treated areas until the tingling sensation all but stops. The tingling may come and go for up to an hour after the peel. Over the next few days after the peel, your skin will flake ever so slightly, if at all.

#### Recommendations:

- On the evening after the treatment, you must not wash your skin. Keep the product on until the following morning.
- The next morning, you can clean your skin as usual.
- In the morning and the evening apply the Skin Tech care creams your practitioner has recommended. You are advised to use Actilift cream to prolong the tightening effect of this peel.
- Sun protection Melablock-HSP®50.





## Easy TCA

### TO TREAT FINE LINES, DISCOLOURATION (MELASMA), ACNE

This is a highly effective medium peel that is well tolerated by the skin. It is applied in 4 weekly sessions. There is no downtime and you can carry on with your activities as normal.

#### In practice:

There is no need to prepare the skin beforehand. While the peel is being applied, you will feel a sensation of warmth on your face that is perfectly bearable. The first 2 days after the peel, your face feels a little tight. The 3rd and 4th day, your skin will flake more noticeably.

#### Recommendations:

- Do not wash the treated area on the evening of the peel. The post-peel cream applied by your practitioner must be kept on until the next day.
- The next day, you can cleanse your face.
- Apply the Skin Tech daily care cream recommended for your skin type. The more you moisturize your skin, the more readily it flakes; your skin will feel better and the results will be better too.
- You must always protect your skin from the sun with Melablock-HSP®50.



Fine lines



Acne

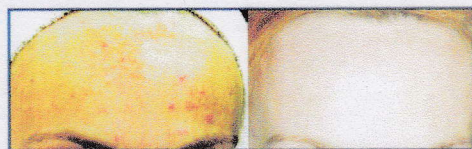
## Unideep

### DERMAL AND EPIDERMAL REGENERATION

This is a medium peel for those of you who want quick results. In just one session, you achieve the results of 4 sessions of Easy TCA. There is a downtime of about 5 days. If you have dark skin, you are advised to use Blending Bleaching depigmenting cream 2 weeks before the peel to reduce the risk of pigmented marks appearing.



Wrinkles



Scars

#### In practice:

If you are sensitive, you might need a local anaesthetic. While the peel is being applied, you will feel a sensation of intense "heat" that is soon alleviated by the post-peel cream.

#### Recommendations:

- Do not wash your skin on the evening of the treatment. Keep the product on until the following morning.
- The next day, you can cleanse your skin.
- From the 7th to the 30th day after the treatment, Blending Bleaching depigmenting cream is recommended twice a day, possibly combined with another Skin Tech daily care cream that is suitable for your skin type.
- Under no circumstances should you go out in the sun and you should use Melablock-HSP®50 as sun protection.



## Only Touch

### LOCAL AND DEEP

This is a deep peel used to treat age and sun spots and benign, localized keratoses on the face and body. The marks must be no more than 1 cm in diameter. Treatment with Only Touch should always be followed by an Easy TCA Peel to even out the results.

#### In practice:

Two weeks before treatment, you should start applying Blending Bleaching depigmenting cream on the area to be treated. The peel solution lightens the marks; immediately after the treatment, your practitioner will apply an Easy TCA peel to even out your complexion.

#### Recommendations:

- Do not wash the treated areas until the next day.
- Use Skin Tech care creams: a vitamin E cream to hydrate your skin; and, in the morning and evening, Blending Bleaching depigmenting cream on the marks to even out your complexion.
- A few days after the peel, some scabs will form. This is perfectly normal and you should not worry. The scabs will heal within 10 days. You must not pick at them or scratch them and you should keep the treated area well hydrated.



Local spots

## Lip & Eyelid Formula

### FOR THE SKIN AROUND THE EYES AND LIPS

This is a deep peel for those with deep wrinkles around the eyelids and lips. This peel has a limited number of indications and only your practitioner can judge if you need it or not. There is a downtime of about 8 days when social life is impossible because of the swelling and scabbing on your face.

Strict contraindications: pregnancy, breast-feeding, insulin-dependent diabetes, herpes.

#### In practice:

If there is a risk of pigment changes, you are recommended to use Blending Bleaching depigmenting cream 2 to 3 weeks before the peel.

If you are very sensitive, you can have a local anaesthetic. Most of the time, this is not necessary.

As soon as the peel is applied, you will feel an intense heat that lasts 12 to 15 seconds (without anaesthesia). After that the peel will be painless.



Eyes wrinkles



Lips wrinkles

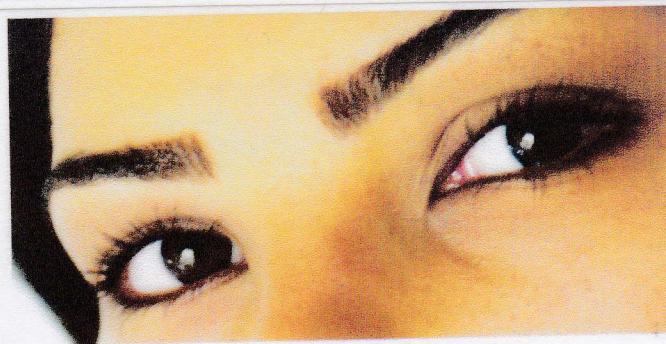
Recommendations —>



## Lip & Eyelid Formula

### Recommendations for the skin around the lips:

- Immediately after the peel, your practitioner applies a transparent occlusive dressing.
- Do not wash the treated area that evening.
- The next day you can wash your face as usual, but not the treated area.
- 24 hours after the treatment, your practitioner must see you again to remove the dressing and apply a yellow powder.
- You must carry on applying this powder (that your practitioner will give to you) as long as the treated area is moist.
- On the 3rd day, the pain returns for a few hours, which is normal and only to be expected: you can take a painkiller if you like.
- On the 3rd and 4th days, your practitioner will see you again to make sure there are no infections.
- On the 5th and 6th days, if the yellow powder has cracked, carefully apply some white Vaseline.
- On the 7th day, the new skin should start to show.
- On the 8th day, make-up and shaving are allowed. Under no circumstances should you go out in the sun and you must use a total sunblock to protect your skin (Melablock-HSP®50).
- After 15 days, 1 month and 3 months, you must see your practitioner who will check how the treatment is progressing and evaluate the results.
- For 3 months, use Blending Bleaching cream to prevent pigmented marks appearing, and Re-Nutriv ACE, an antioxidant cream with vitamins A, C and E to hydrate your skin. And keep using sun protection, Melablock-HSP®50. The more you hydrate and protect your skin, the more you optimize and prolong the effects of the peel.



### Recommendations for the area around the eyes:

- After the peel, there is no occlusive dressing.
- Put in eye drops several times a day (artificial tears).
- In the evening, do not wash the treated area. If necessary, take a painkiller prescribed by your practitioner.
- The next day, you can wash your face as usual, but not the treated area.
- 24 hours after the treatment, it is important that your practitioner sees you again to evaluate progress. He will prescribe an antibiotic cream that you must apply 4 times a day for 7 days. Wash your skin thoroughly before applying a new coat of the cream.
- On the 3rd day, you will feel some pain again for a few hours: this is normal and you can take a painkiller if necessary.
- On the 3rd and 4th day, your practitioner will see you again to make sure there are no infections.
- On the 5th and 6th day, keep applying the antibiotic cream.
- On the 7th day: the new skin should start to show.
- On the 8th day: make-up and shaving are allowed. Under no circumstances should you go out in the sun and you must use sun protection (Melablock-HSP®50).
- After 15 days, 1 month and 3 months: you will see your practitioner who will check how the treatment is progressing and evaluate the results.
- For 3 months: use Blending Bleaching Cream to prevent marks appearing, and Re-Nutriv ACE, an antioxidant cream with vitamins A, C and E to hydrate the skin. Keep using total Melablock-HSP®50 to protect your skin from the sun. The more you hydrate and protect your skin, the more you optimize and prolong the effects of the peel.



## Skin Tech daily care creams



Each cream in our range has been designed with a specific problem in mind. Using the creams immediately after a peel and on a regular long-term basis optimizes results.

### **VIT. E ANTI-OXYDANT: dry or sensitive skins**

A moisturizing cream with vitamin E that protects your skin against free radicals and environmental damage. It is fluid and penetrates the skin without leaving any traces.

### **DHEA-PHYTO: anti-aging for mature skins**

A moisturizing, anti-free radical cream that stimulates skin renewal and leaves a film on the skin to protect it against environmental damage. An excellent base for make-up.

### **RE-NUTRIV ACE LIPOIC COMPLEX: anti-aging for all ages**

A super antioxidant cream with vitamins A, C and E and lipoic acid. Also prevents oxidative damage after sunburn or chemical burns (from a peel or laser treatment).

### **PURIFYING CREAM: treatment against acne**

Clears the skin of impurities caused by hormonal imbalances in adolescence or maturity.

### **PURIGEL: treatment of maintenance against acne**

Gel recommended for a daily long-term use to avoid the acne incidences.

### **BLENDING BLEACHING CREAM: age & sun spots, blotchy complexion**

A depigmenting cream that treats and prevents hyperpigmentation marks. It lightens the complexion and refines skin texture.

### **ACTILIFT ET ACTILIFT BODY: tightening effect**

Face cream and body lotion with DMAE. Improves hydration of the dermis and strengthens the defences of the epidermis, making the skin more elastic and minimizing the signs of aging. To be used before your Skin Tech daily care cream.

### **MELABLOCK-HSP®50 / MELABLOCK-HSP® BASE COLOR 50: sun protections**

Sun protections against 98% of UVA and UVB rays, anti heat shock. Protect against cell death caused by high skin temperature during sun exposure.

### **MELABLOCK-HSP® SPRAY 25: sun protection**

Sun protections against 98% of UVA and UVB rays, anti heat shock. Protect against cell death caused by high skin temperature during sun exposure.

### **CLEANSER: cleansing foam**

Morning and evening: cleanses the skin thoroughly without damaging it.

### **B-PHASE ADDICTION®: Anti-Aging serum**

Hydrating serum containing a highly concentrated mixture of 3 oligopeptides (pentapeptide, hexapeptide and octapeptide), prevents and treats wrinkles expression and skin aging.

### **IPLASE MASK®: post treatment**

Daily protection for skin subjected to all types of thermogenic treatment (Laser, Intense Pulsed Light, UV Radiation, thermogenic radio frequencies, etc.).

## How to use our creams?

Indications	Creams	Use
Dry, dehydrated skin	Vit. E Anti-Oxydant	Morning and evening
Aging skin less 40	Actilift / Vit. E Anti-Oxydant Actilift / Re-Nutriv ACE	Morning Evening
Aging skin skins	Actilift / DHEA-Phyto Actilift / Re-Nutriv ACE	Morning Evening
Acne	Purifying Cream Purigel	Morning and evening
Sun and age spots	Blending Bleaching Cream	Morning (on the whole face) Evening (on marks)
Sagging skin on the body	Actilift Body	Morning and evening
Sun exposure	Melablock-HSP®50 Melablock-HSP® Base Color 50 Melablock-HSP® Spray 25	Every 2 hours
Anti-Aging serum	B Phase Addiction®	Morning and evening
Post treatment	IPLase Mask®	Morning and evening